

# Versana Active™

Care with confidence





# Introducing Versana Active

Versana Active ultrasound system delivers the imaging capability of a console in a hand-carried, lightweight package that enables you to actively take your system to your patients, on premises or remote facilities. This reliable system brings the agility of a laptop unit with the capability for attaching to a cart. Durable and adaptable to perform in diverse, nursing home environments, it is easy to carry from room to room or office to office.

This high-quality yet affordable unit comes from the GE HealthCare legacy of ultrasound imaging excellence. It combines design, workflow, and features based on extensive research and testing to meet users' demanding requirements.

**Advanced. Capable. Adaptable.**  
*World-class ultrasound designed for peace of mind.*



World-class image quality



Durability for demanding usage day after day



Smart clinical applications for thyroid, bladder, and more



Intelligent automated productivity tools including Whizz Dynamic Image Tuning



Scan Assistant to customize exam protocols



Clinical and product education\*

## A partner you can trust

Count on GE HealthCare for equipment and support to help you reach new levels of nursing home imaging excellence

### Dependable service and support for peace of mind

GE HealthCare delivers flexible, multi-year coverage to ensure long life, high uptime, efficient patient throughput, strong return on investment.

- Expert service engineers always close by
- Simple maintenance, troubleshooting and repair
- InSite™ service technology for fast remote diagnostics\*
- Three-year warranty\*

### Decades of GE HealthCare heritage at your service

Versana Active links you to vast GE HealthCare ultrasound expertise. It's designed with you, your practice, and your patients in mind to meet your clinical, workflow and connectivity needs.

\*Warranty and remote diagnostic offerings may vary by country or region. Please check with your local GE HealthCare representative.



Flexible financing options\*



Expert service and technical support



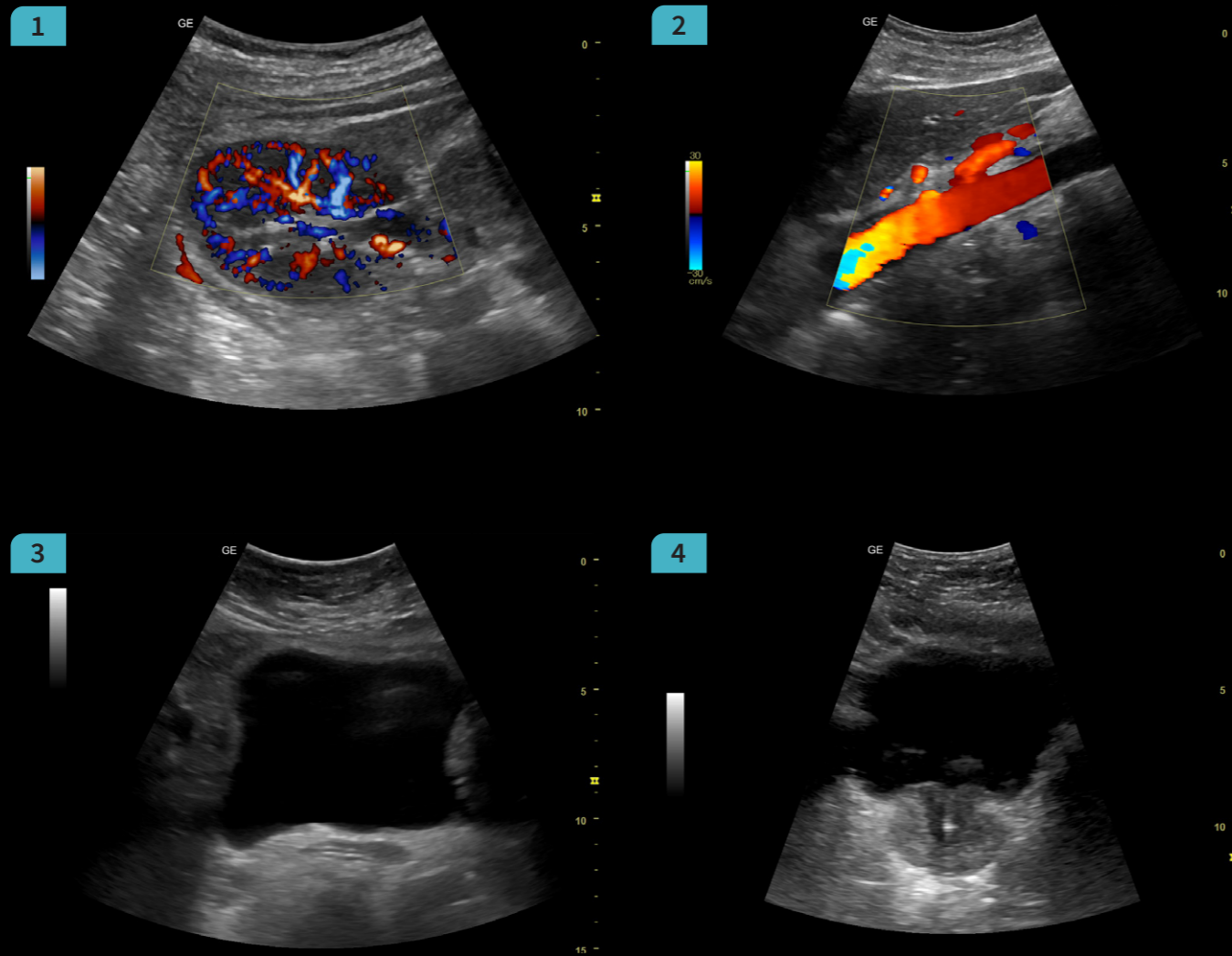
Access to a network of Versana users

\*Local educational offerings and financing options may vary according to regions. Please check with your local GE HealthCare representative.

## Advanced capability in a compact system

Versana Active image quality ranks with the best in its class and persists for the life of the system. High spatial and contrast resolution help you clearly visualize anatomical structures and physiological functions to make confident decisions at the point of care.

Whizz One-Touch Dynamic Image Tuning constantly optimizes image quality as you scan, even as you move from one organ or region to another. This world-class yet affordable system also gives you proven functionalities from higher-end GE HealthCare ultrasound systems.



1. 4C-RS Renal with Power Doppler Imaging
2. 4C-RS Aorta with Color Flow Imaging
3. 4C-RS Urinary Bladder
4. 4C-RS Trans Prostate

# A complete solution

## Advanced applications, educational support, and attractive financing

### Capable, adaptable system for comprehensive scanning

The light, portable Versana Active makes exams comfortable for you and your patients in clinic. Scan at bedside in space-constrained rooms and throughout busy nursing homes. Perform bladder, abdominal, cardiac, MSK and vascular exams, and more – plus needle-guidance procedures. This highly-adaptable system lets you add a cart to create a full-featured console system and suit your

practice needs. Fast boot-up lets you place the system in standby, then instantly scan the next patient who needs imaging. Clinical applications and automated tools simplify exams, streamline workflow, and enable fast, high-volume scanning.



**Whizz Dynamic Image Tuning** for seamless, continuous image optimization



Use **Scan Coach** 3D animation, anatomic illustrations and reference images to find the correct scan plane



Use **Auto Bladder** to easily calculate volumes, including residual urine volume



**Upload images and reports** to the cloud for consultation or sharing with patients



**My Trainer:** On-boarding tools help support you through system setup, operation, cleaning, and maintenance



Create custom exam protocols and standardized workflow with **Scan Assistant**



**Measurement Tools:** Tools to automate measurements and enable fast, high-volume scanning



Use the **Follow-Up Tool** to easily compare current and prior images



Use **templates** to create custom reports to suit global or regional standards



Easily add **voice comments** to exams



**Perpetual battery life** by design<sup>†</sup>



Enhanced ergonomics with **advanced cart**<sup>†</sup>

### Flexible financing to enhance return on investment

Financing plans including monthly payments help you meet financial goals and grow your practice.

<sup>†</sup>Available on Versana Active v1.5.  
\*External batteries can be charged remotely and changed while system is on.

## Check out these convenient features



Choice of three optional carts with height adjustability option to suit scanning preferences†



†Available on Versana Active v1.5



## Versana Active is part of the Versana Ultrasound family

Complete solutions that help empower care without compromise, balancing capability, affordability, and reliability.

# An opportunity for growth

## Versana ultrasound systems to serve you well today and set your course for the future.

### Experience the strength of the GE HealthCare family

Your support team is fully trained, GE HealthCare qualified, deeply experienced, and nearby.

- Expert support during and after purchase
- In-depth staff product training
- Remote or on-site technical, clinical and network support

### Customized solutions and path to growth

Versana Active can scale to suit your general practice today and grow with you. Select a basic system and software. Then choose from optional upgrades as your practice advances. Then choose from optional Versana upgrades or a wide range of specialized GE HealthCare ultrasound systems as your practice advances.

### Versana Club: Learn. Network. Share.

The Versana Club community offers resources to help you expand your ultrasound knowledge and improve your practice.

- Educational offerings
- Web-based video tutorials
- Information on Versana family service solutions and products
- Up-to-date content on ultrasound and patient care
- Notices of regional ultrasound events and other news
- Access to the broader family of GE HealthCare ultrasound user clubs

Register now at [www.versanaclub.net](http://www.versanaclub.net).



# Versana Active

Care with confidence

Advanced. Capable. Adaptable.



## About GE HealthCare

GE HealthCare is a leading global medical technology, pharmaceutical diagnostics, and digital solutions innovator, dedicated to providing integrated solutions, services, and data analytics to make hospitals more efficient, clinicians more effective, therapies more precise, and patients healthier and happier. Serving patients and providers for more than 100 years, GE HealthCare is advancing personalized, connected, and compassionate care, while simplifying the patient's journey across the care pathway. Together our Imaging, Ultrasound, Patient Care Solutions, and Pharmaceutical Diagnostics businesses help improve patient care from prevention and screening, to diagnosis, treatment, therapy, and monitoring. We are an \$18 billion business with 51,000 employees working to create a world where healthcare has no limits.

Follow us on [Facebook](#), [LinkedIn](#), [Twitter](#), [Instagram](#) and [Insights](#) for the latest news, or visit our website [gehealthcare.com](https://www.gehealthcare.com) for more information.

Products mentioned in the material may be subject to government regulations and may not be available in all countries. Shipment and effective sale can only occur after approval from the regulator. Please check with local GE HealthCare representative for details.

©2023 GE HealthCare.

Versana Active and InSite are trademarks of GE HealthCare. GE is a trademark of General Electric Company used under trademark license.

March 2023 JB23918XX



GE HealthCare