



Versana Active™

Care with Confidence



INTRODUCING Versana Active



Versana Active™ ultrasound delivers the imaging capability of a console in a hand-carried, lightweight unit that lets you take OB/GYN imaging power to your patients. This reliable system brings the agility of a laptop unit with capability for carrying on a cart. Adaptable to cover a broad range of exams, it is easy to carry within clinics and physician offices and off premises, including remote public health centers in need of quality OB/GYN care.

This high-quality yet affordable unit comes from the GE Healthcare legacy of ultrasound imaging excellence. It combines design, workflow and features developed based on extensive research and testing to meet users' demanding requirements.

ADVANCED. CAPABLE. ADAPTABLE.
World-class ultrasound designed for peace of mind.

World-class
image quality,
including 3D
imaging

Durability for
demanding usage
day after day

Smart
clinical features

Whizz dynamic
image tuning and
other automated
productivity tools

Scan Assistant
to customize OB/GYN
exam protocols

On-board
product tutorials
and clinical education*

Flexible
financing options*

Expert service and
technical support

Access to a network
of Versana users

Versana Active
is part of the Versana
ultrasound family:
complete solutions
that help empower care
without compromise,
balancing capability,
affordability, and
reliability.

A partner you can trust

Count on GE Healthcare for equipment and support to help you reach new levels of OB/GYN excellence



Dependable service and support for peace of mind

GE Healthcare delivers flexible, multi-year coverage to ensure long life, high uptime, efficient patient throughput, strong return on investment.

- Expert service engineers, always close by
- Simple maintenance, troubleshooting and repair
- InSite™ service technology for fast remote diagnostics* and software fixes
- Three-year warranty*

*Warranty and remote diagnostic offerings may vary by country or region. Please check with your local GE Healthcare representative.

Decades of GE Healthcare heritage at your service

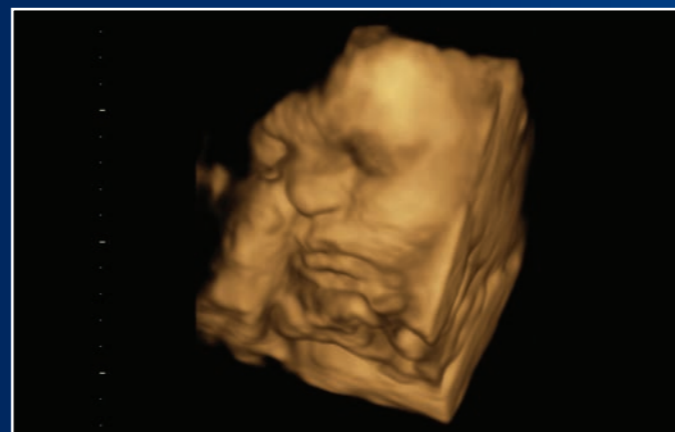
Versana Active links you to vast GE Healthcare OB/GYN ultrasound experience. It's designed with you, your practice, and your patients in mind, to meet your clinical, workflow and connectivity needs.



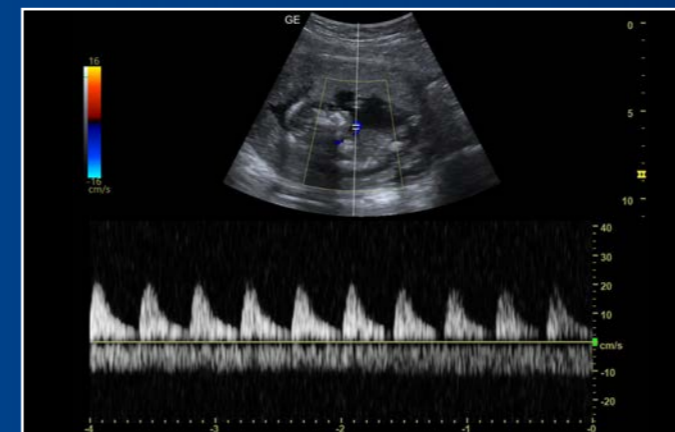
Advanced capability in a compact system

Versana Active OB/GYN image quality ranks with the best in its class and persists for the life of the system. High spatial and contrast resolution help you clearly visualize anatomical structures and physiological function, and make confident decisions at the point of care.

Whizz one-touch dynamic image constantly optimizes image quality as you scan, even as you move from one organ or region to another. This world-class yet affordable system also gives you proven functionalities from higher-end GE Healthcare ultrasound systems.



4D functionality aids in decision making through enabling additional dimension in real time.†



Sensitive spectral Doppler imaging to analyze blood flow including fetal blood flow.



Sensitive color Doppler to assess endometrial health, and three-vessel umbilical cord, nuchal cord and fetal heart status.

†Available on Versana Active v1.5

A complete solution

Advanced applications, educational support, attractive financing

Capable, adaptable system for comprehensive OB/GYN scanning

The light, portable Versana Active makes OB/GYN exams comfortable for you and your patients, in clinic or off site. Scan at bedsides or in space-constrained rooms. This highly adaptable system lets you add a cart to create a full-featured console system and suit your practice needs. Clinical applications and automated tools simplify exams, streamline workflow, and enable fast, high-volume scanning.



Create custom OB/GYN exam protocols and standardized workflow with **Scan Assistant**



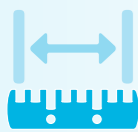
Use **Scan Coach** 3D animation, anatomic illustrations and reference images to find the correct scan plane



View fetal details with **3D imaging**



Use **Whizz** dynamic image tuning to scan while the system seamlessly optimizes image quality



Take fetal measurements with **SonoBiometry**



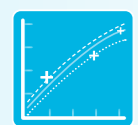
Use **templates** to create custom reports to suit global or regional standards



Record fetal growth monitoring and structure descriptions



Easily add **voice comments** to exams



Use **Fetus Growth Trend** to compare current and prior exams and track fetal development



Upload images and reports to the cloud for consultation or sharing with patients



4D provides continuous, high-volume image acquisition*



Enhanced ergonomics with **advanced cart***



Perpetual battery life by design**

*Available on Versana Active v1.5.

**External batteries can be charged remotely and changed while system is on.

Flexible financing to enhance return on investment

Financing plans including monthly payments help you meet financial goals and grow your practice.

CHECK OUT THESE CONVENIENT FEATURES

Convenient carrying handle



High durability

Light (5 kg/11.02 lb) and slim (57 mm/2.3 in)



Wide range of probe offerings*



Choice of three optional carts with height adjustability option to suit scanning preferences*

Multiple probe port connectivity on carts*

*Available on Versana Active v1.5

Sharpen your skills and stay ahead of the curve

- Training and ultrasound education solutions including product and clinical tutorials
- My Trainer on-board help with system care, setup and operation
- Local face-to-face training and remote application support

Cloud access requires internet connection. Financing options and educational offerings vary from country to country. Please check with your local GE Healthcare representative.





An opportunity for growth

Versana ultrasound systems to serve you well today and set your course for the future.

Experience the strength of the GE Healthcare family

Your support team is fully trained, GE Healthcare qualified, deeply experienced, and nearby.

- Expert support during and after purchase
- In-depth staff product training
- Remote or on-site technical, clinical and network support

Customized solutions and path to growth

Versana Active can scale to suit your OB/GYN practice today and grow with you. Select a basic system and software. Then choose from optional upgrades as your practice advances.

Versana Club: Learn. Network. Share.

The Versana Club offers resources to help you expand your ultrasound knowledge and improve your practice.

- Image-sharing with OB/GYN peers around the world
- Educational offerings including web-based video tutorials
- Information on Versana service solutions and products
- Articles on OB/GYN ultrasound and patient care
- Notices of regional ultrasound events
- Access to other GE Healthcare user clubs

Register now at www.versanaclub.net.



VERSANA ACTIVE: CARE WITH CONFIDENCE
Advanced. Capable. Adaptable. World-class ultrasound designed for peace of mind.

Products mentioned in this material may be subject to government regulation and may not be available in all countries. Please check with your local Sales Representative. Shipment and the effective sale in certain countries can only occur if the product is approved. Final product configuration and features may differ from the ones represented here and may not be available in every country. Check with your local GE Healthcare representative for details.

†Available on Versana Active v1.5

© 2020 General Electric Company – All rights reserved.

GE Healthcare reserves the right to make changes in specifications and features shown herein, or discontinue the product described at any time without notice or obligation. Contact your GE Healthcare representative for the most current information. GE, the GE Monogram, Versana Active, InSite, CrossXBeam and B-Flow are trademarks of General Electric Company. GE Healthcare, a division of General Electric Company. GE Medical Systems, Inc., doing business as GE Healthcare.

August 2020
JB69629XX

