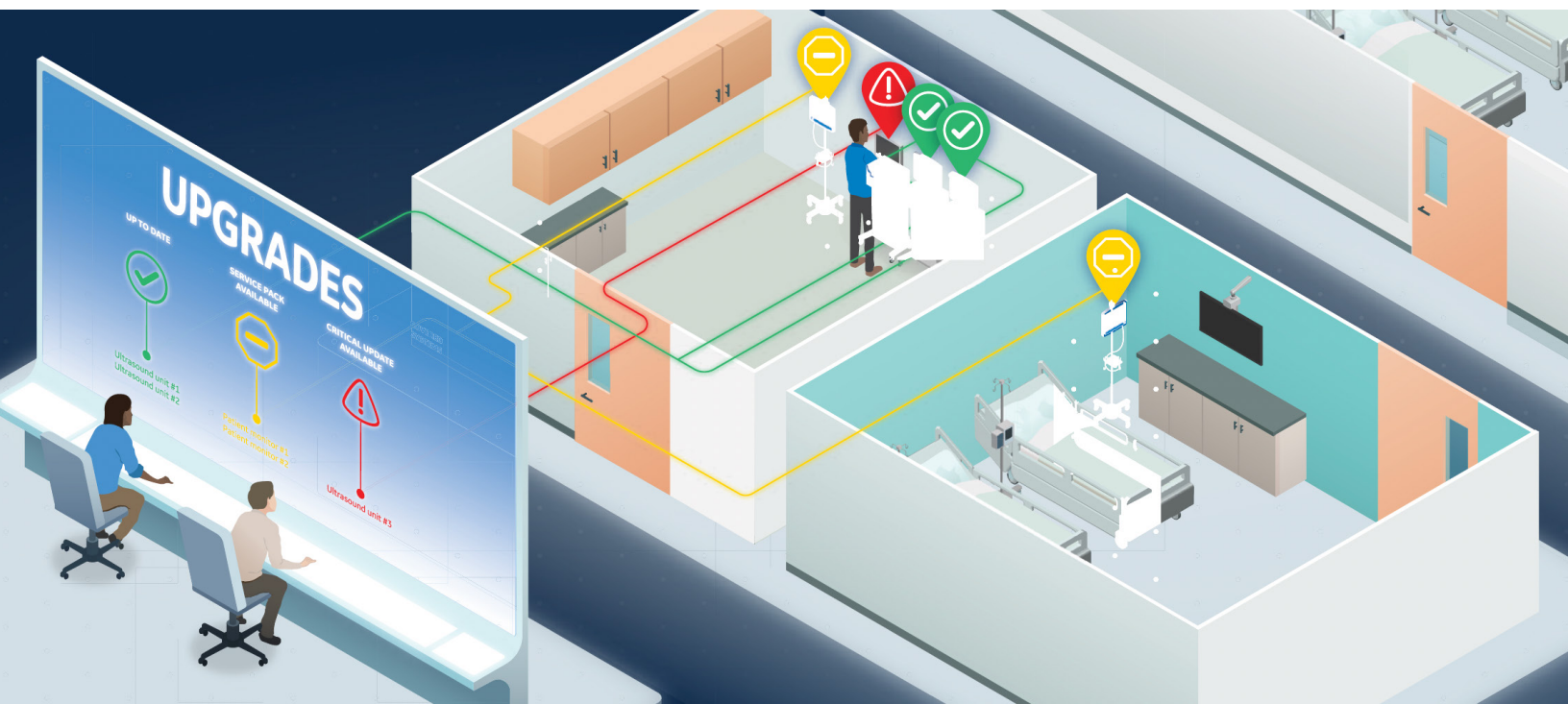


# Continuity™ Advance

Helps to ensure your technology investments remain current over the lifecycle of your GE HealthCare ultrasound system.



Continuity Advance defends your investment in your GE HealthCare ultrasound equipment by providing upgrades, software updates, operating system (OS) patches, and OS obsolescence protection — verified by our engineering teams and installed on-site by our field engineers. Our comprehensive approach provides a streamlined and cost-effective way to ensure that your system will receive technology upgrades that help it stay at the clinical forefront.

## Fast fact:

**\$11m**

the average cost of a healthcare cyber attack<sup>1</sup>



Protect the expected life of your ultrasound system by ensuring the operating system is supported and patchable; plus making patches available.



Keep your operating system up-to-date.



OS obsolescence protection keeps your system on a supported OS.



Stay clinically advanced.



Includes on-site installation by GE HealthCare Field Engineers.

## Upgrades and OS obsolescence protection that support a secure clinically advanced system

Ultrasound systems combine rapidly evolving software and hardware, which means even the newest software and operating systems can quickly become outdated as vulnerabilities are uncovered and improvements are made to the code. Individually purchasing, installing, and managing OS patches and software updates and upgrades can be a time consuming and costly process—but they are critical to keep your devices secure, reliable, and up-to-date.

Continuity Advance provides an efficient and cost-effective way to ensure that your ultrasound system is upgraded to meet the ever changing capabilities required to consistently deliver clinical innovation in patient care. Financial predictability over the life of the device helps contribute to maximizing return on capital equipment.

Long after a device is initially released, our engineers remain hard at work verifying OS patches and software updates to ensure they meet our rigid standards. Periodically, a GE HealthCare field engineer will install the latest software updates which include OS patches as well as application software updates. This streamlined update process helps keep your equipment staying ahead of evolving cyber threats and maintaining the protection and performance needed to provide exceptional patient care.

In 2020, 70% of existing medical devices were running on an unsupported OS leaving them vulnerable to cyberattacks<sup>2</sup>.

Continuity Advance also protects against future OS obsolescence by providing for an OS upgrade, including enabling hardware if required, should the OS OEM declare the end of life/support during the term. Continuity Advance helps keep your ultrasound devices up-to-date and protected throughout their entire lifecycle with a streamlined process and at a predictable cost. These proactive upgrades and updates ensure your system is technologically up-to-date, allowing you to keep your focus on patient care.

1. "Average cost of healthcare data breach reaches \$11M, report finds." <https://www.healthcaredive.com/news/average-cost-healthcare-data-breach-11-million/688859/>

2. "Putting Healthcare Security Under the Microscope," Forescout Technologies, 2019.

For more information on Continuity Advance for GE HealthCare ultrasound, please contact your local GE HealthCare representative.