

Vscan Air™

Optimize your workflow, maximize your patient's experience



As Obstetricians, Midwives, and Labor & Delivery Nurses, you're the guardians of maternal and newborn health. We're here to amplify your impact, providing not just products but holistic solutions and services. From pioneering imaging that unveils intricate fetal anomalies to empowering maternal and fetal monitoring systems, GE HealthCare is your steadfast partner in the women's health journey.

Get to know our pocket-sized portable solution Vscan Air CL, offering a curved and linear array in a single device.



Anytime, Anywhere*: Meet Vscan Air CL

Imagine a world where high-quality ultrasound imaging is as accessible as your smartphone. With Vscan Air CL, that's your reality. Designed for the individual, it's always with you – ultraportable, cordless, and intuitive for when you need immediate insights.

Insights in hand

Vscan Air provides options for quick fetal biometry assessments. For when you just need a quick look to confirm fetal heart rate, assess amniotic fluid and more. No need to interrupt your imaging schedule for emergent cases unnecessarily.

Patient Experience

Expectant mothers are looking for reassurance. Give them that and more with Vscan Air. An ultrasound that you'll always have access to because it's in your pocket. Easily share images with just a few taps.



OB Measurements – CRL, BPD, HC, AC, FL, DVP, AFI, AOP



M-Mode



Annotations



Pulsed Wave Doppler



Color Doppler



Easily share images



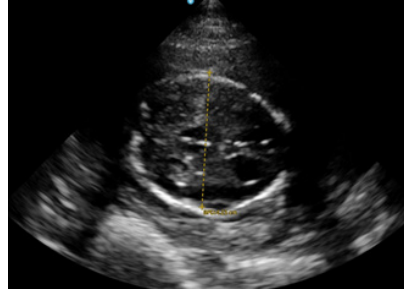
One swipe/tap controls



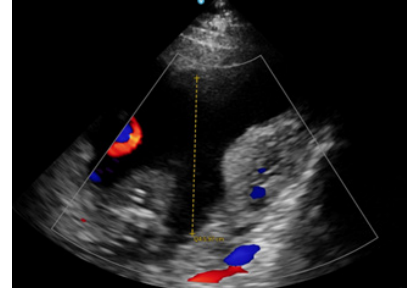
Quickly confirm pregnancy viability with the use of Vscan Air CL. One study found that Vscan Air was able to confirm vitality with abdominal ultrasound including for **gestational week seven at a sensitivity of 94%**.¹



Fetal profile



Fetal biometry



Amniotic fluid measurement

We're with you throughout the patient's journey

Vscan Air goes with you to every patient

Antenatal Care

From confirming an intrauterine pregnancy to giving expectant parents the first look of their baby – Vscan Air can help streamline your outpatient cases and efficiently utilize your ultrasound.

Intrapartum

For when palpations alone aren't enough or there's an uninterpretable fetal trace, get reassurance with Vscan Air.

Triage & consults

Prior to admitting, you need quality tools at your fingertips to give you the answers you need. Quickly confirm fetal heart rate, detect intrauterine pregnancy, and more – anywhere, anytime*.

Gynecology

Vscan Air brings the convenience of planned and unplanned ultrasound. Reduce your differential diagnoses with the power to quickly rule – in and out conditions and address your patient's needs.

Assessments in hand

Consider the possibilities of handheld ultrasound throughout pregnancy, birth and beyond...

- Fetal viability and cardiac activity assessment
- Fetal biometric measurements
- Assess amniotic fluid volume
- Confirm fetal demise
- Determine fetal presentation and position
- Measure angle of progression
- Assess maternal cardiopulmonary status
- Evaluate placenta position; rule in/out placenta previa
- Assess fetal head descent
- Assess labor progress
- Gynecologic pathology



Vscan Air CL (curved/linear)

See More. Treat Faster.

*The device has been verified for limited use outside of professional healthcare facilities. Use is restricted to environmental properties described in the user manual.

¹Judith Krossøy Pedersen, Cecilie Sira & Jone Trovik (2021) Handheld transabdominal ultrasound, after limited training, may confirm first trimester viable intrauterine pregnancy: a prospective cohort study, Scandinavian Journal of Primary Health Care, 39:2, 123-130, DOI: 10.1080/02813432.2021.1910643

© 2023 GE HealthCare.

Vscan Air is a trademark of GE HealthCare. GE is a trademark of the General Electric Company, used under trademark license.

Commercial availability of GE HealthCare products is subject to meeting local requirements in a given country or region. Contact a GE HealthCare Representative for more information. Intended for healthcare professionals only.

JB26699XX