

CT Virtual Solutions | Where do I start?

Enjoy the same instructor led training in our virtual learning classes.



The following virtual courses provide practical hands-on time with a Clinical Applications Specialist either from a quiet space on a computer through a virtual machine or delivered directly on the CT system or Advantage Workstation.



Courses with credits have been approved for Category A or A+ ASRT approved CE credits. All registered technologists who attend the entire course are eligible to receive CE credits. Total eligible CE credits are dependent on the duration of the course chosen.

These offerings are available through current training plans purchased with equipment or purchasable as separate offerings. Inquire upon registration.

Review the course descriptions by clicking the Course button for details. To schedule a course and for more information scan the QR Code to direct to our Virtual Course Registry or click [HERE](#).

[Click Here to Learn More About Virtual Instructor Led Training](#)



Table of Contents Icon Key:



The course has been approved for Category A or A+ ASRT approved CE credits. All registered technologists who attend the entire course are eligible to receive CE. Total eligible CE credits are dependent on duration of the course chosen.



The following remote courses provide practical hands-on time with a Clinical Applications Specialist either from a quiet space on a computer through a virtual machine or delivered directly on the CT system or Advantage Workstation. Review the course descriptions that reflect the best solution and scan the QR code to schedule your next training.



A flexible virtual solution that is scheduled by the trainee. This interactive session is through a digital presence as the trainee is on the CT or AW equipment. The education is delivered by a GE Healthcare Clinical Application Specialist.

Contents:

Select a course title to navigate to the corresponding course description page.

 **2 Days**
(12 Hours)

 **1 Days**
(7 Hours)

Contents:

Select a course title to navigate to the corresponding course description page.

 4 Hours

 3 Hours

 2 Hours

 1 Hour

Instructor Led Virtual Courses

CT User Interface System

 **2 Days**
(12 Hours)



Course description:

Introduction of the CT user interface and system features. Understand the CT theory.

Did you know...

There are quality checks you can look for to ensure optimal protocol optimization.

After this course, you will be able to:

- Navigate the user interface desktop
- Understand the system components and detector configuration
- Protocol Introduction and parameter review
- Image and Recon Management

Who should attend this course?

CT Technologist

Course Prerequisites:

Quiet space, desktop and/or laptop computer to include: internet access, audio, visual, headphones, tablet, and mouse capabilities.

CT System:

Revolution™ Ascend, Revolution™ Apex

Quick Reference Icon Key:



Hands On



Credits Available

To schedule a course and for more information scan the QR Code to direct to our Virtual Course Registry or click [HERE](#).

[Click Here to Learn More About Virtual Instructor Led Training](#)



Instructor Led Virtual Courses

Coronary Angiography CT Imaging

 **1 Days**
(7 Hours)



Course description:

Introduction of Coronary Angiography CT Imaging

Did you know...

Optimal CCTA images start with the CT Technologists ability to understand the importance of patient preparation and scan setup.

After this course, you will be able to:

- Understand ECG monitor and ECG electrode placement
- Navigate Cardiac Scanning Options
- Review and process Image reconstitutions
- Identify Cardiac anatomy

Who should attend this course?

CT Technologist

Course Prerequisites:

Quiet space, desktop and/or laptop computer to include: internet access, audio, visual, headphones, tablet, and mouse capabilities.

CT System:

Revolution HD, Revolution Frontier™, Revolution™ Ascend, Revolution™ Maxima, Revolution™ Apex

Quick Reference Icon Key:



Hands On



Credits Available

To schedule a course and for more information scan the QR Code to direct to our Virtual Course Registry or click [HERE](#).

[Click Here to Learn More About Virtual Instructor Led Training](#)



Instructor Led Virtual Courses

CT Gemstone Spectral Imaging (GSI) Clinical Scenario

 4 Hours



Course description:

Learn about the clinical scenarios on why and when to image with GSI.

Did you know...

You can use GSI on routine abdominal imaging and for CT Angiography exams?

After this course, you will be able to:

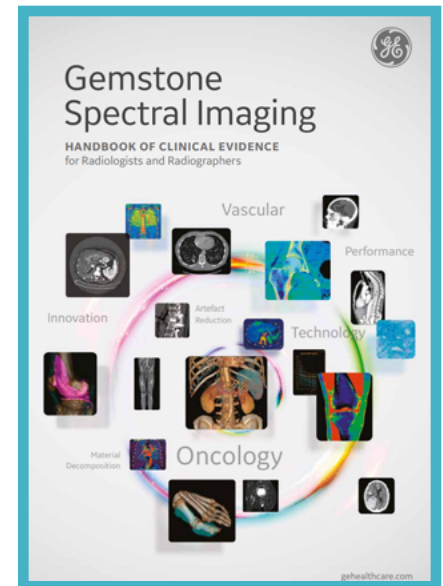
- Understand the clinical scenarios to use with GSI
- Understand the theory of the GSI
- Understand how GSI can be used in day-to-day scanning
- Understand the protocol options upon protocol set up for GSI imaging

Who should attend this course?

Lead CT Technologists, CT Protocol Champions, Radiologists

CT System:

Revolution HD, Revolution Frontier™, Revolution™ Ascend, Revolution™ Apex



Quick Reference Icon Key:



Hands On



Credits Available

To schedule a course and for more information scan the QR Code to direct to our Virtual Course Registry or click [HERE](#).

[Click Here to Learn More About Virtual Instructor Led Training](#)



Instructor Led Virtual Courses

CT: Remote User Interface Review

Revolution Frontier™, Optima™ 660, Revolution™ Maxima, Revolution™ Evo

 4 Hours



Course description:

Users will be familiarized with the legacy interface in this course and will learn about workflow, left and right monitor icons, and general usage. This course is perfect for beginners or technologists transitioning to the CT Department.

Did you know...

You can learn about important system and safety requirements to improve patient care and understanding system workflow.

After this course, you will be able to:

- Navigate the User Interface Desktop
- Understand System Safety and Daily Requirements
- Image Quality and Management

Who should attend this course?

CT Technologists

Course Prerequisites:

Quiet space, desktop and/or laptop computer to include Internet access, audio, visual, headphones, and mouse capabilities.

CT System:

Revolution Frontier™, Optima™ 660, Revolution™ Maxima, Revolution™ Evo

Quick Reference Icon Key:



Hands On



Credits Available

To schedule a course and for more information scan the QR Code to direct to our Virtual Course Registry or click [HERE](#).

[Click Here to Learn More About Virtual Instructor Led Training](#)



Instructor Led Virtual Courses

CT Volume Viewer 3D Tools

🕒 3 Hours



Course description:

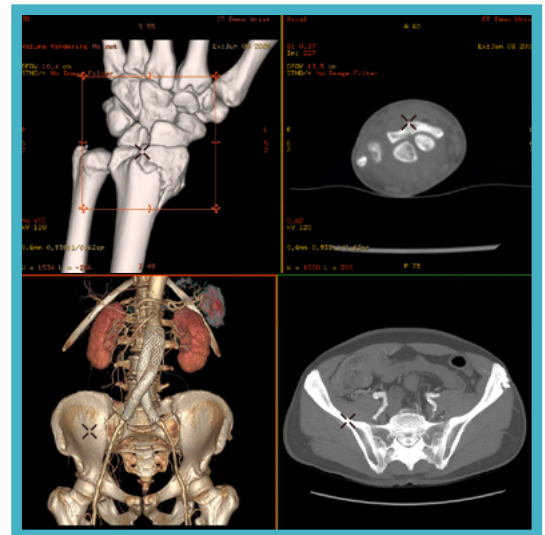
General overview of the 3D protocols in Volume Viewer and how to build a 3D Volume Rendering (VR) image of a Bone and CTA structure.

Did you know...

You can use GE's Volume Viewer to create 3D Bone & Vessel imaging.

After this course, you will be able to:

- Understand the Volume Viewer protocol library
- Optimize VR settings including VR opacity, color range, pick from VR, AutoSelect tools and scalpel.
- Export the 3D models using various saving options.



Who should attend this course?

Lead CT Technologist, 3D Lab Technologist, Radiologist

CT System:

Revolution HD, Revolution Frontier™, Revolution™ Ascend, Revolution™ Apex

Quick Reference Icon Key:



Hands On



Credits Available



Virtual Solution

To schedule a course and for more information scan the QR Code to direct to our Virtual Course Registry or click [HERE](#).

[Click Here to Learn More About Virtual Instructor Led Training](#)



Instructor Led Virtual Courses

CT Cardiac Anatomy

🕒 2 Hours



Course description:

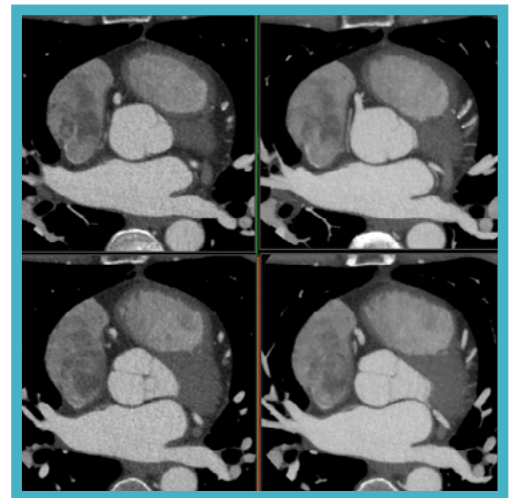
General overview of 2D Cardiac anatomy.

Did you know...

You can use GE's Volume Viewer to create multiplanar oblique imaging of the coronary arteries?

After this course, you will be able to:

- Understand the Volume Viewer protocol library
- Describe the location of the LMA, RCA, LAD, PDA and other great vessel structures of the heart
- Create multiplanar views of the coronary arteries and export the images to the browser



Who should attend this course?

CT Technologist, 3D Lab Technologist, Radiologist

CT System:

Compatible for all CT Systems interested in cardiac imaging with post processing capabilities.

Quick Reference Icon Key:



Hands On



Credits Available



Virtual Solution

To schedule a course and for more information scan the QR Code to direct to our Virtual Course Registry or click [HERE](#).

[Click Here to Learn More About Virtual Instructor Led Training](#)



Instructor Led Virtual Courses

CardIQ Xpress Course

 2 Hours



Course description:

Details on post processing coronary vessels on CardIQ Xpress Advantage Workstation (AW) or AW Server.

Did you know...

Post Processing is easier than ever with automatic tracking capabilities and other great tools.

After this course, you will be able to:

- Track coronary vessels
- Create images for network to viewing stations
- Learn more Tips & Tricks to apply to all cases workload

Who should attend this course?

CT Technologist, 3D Lab Technologist, Radiologist

AWS System:

3.2 extension and higher

CT System:

Compatible for all CT Systems interested in cardiac imaging with post processing capabilities

Quick Reference Icon Key:



Hands On



Credits Available



Virtual Solution

To schedule a course and for more information scan the QR Code to direct to our Virtual Course Registry or click [HERE](#).

[Click Here to Learn More About Virtual Instructor Led Training](#)



Instructor Led Virtual Courses

VessellQ Xpress Course

 2 Hours



Course description:

Essentials on post processing carotid, aorta and other angiography imaged vessels on VessellQ Xpress Advantage Workstation (AW) or AW Server.

Did you know...

Post Processing is easier than ever with automatic tracking capabilities and other great tools.

After this course, you will be able to:

- Track vessels in almost every part of the human anatomy
- Create images for network to viewing stations
- Learn more Tips & Tricks to apply to all cases workload

Who should attend this course?

CT Technologist, 3D Lab Technologist, Radiologist

AWS System:

3.2 extension and higher

CT System:

Compatible for all CT Systems interested in cardiac imaging with post processing capabilities

Quick Reference Icon Key:



Hands On



Credits Available



Virtual Solution

To schedule a course and for more information scan the QR Code to direct to our Virtual Course Registry or click [HERE](#).

[Click Here to Learn More About Virtual Instructor Led Training](#)





Instructor Led 1 Hour Virtual Courses

CT Virtual Courses

 1 Hour

The following courses are available through Tip Virtual Assist or in an interactive class room using virtual machines.



Course	Description	Pre-Requisites
CT Ask an Expert	An Ask an Expert Session is geared to the attendee to ask directed questions to a specific topic or system feature. Each session is scheduled for up to an hour.	System access may be required
CT Remote Clarity User Interface Review 	Introduce the clarity interface to new staff, use as a lunch and learn for staff that did not attend the onsite training, review with staff that have remaining questions.	Access to system or use of Microsoft Teams for virtual review.
CT Remote User Interface 	Review System Health, workflow, Dose optimization and image quality. Excellent opportunity to review with staff in lunch and learn for safety review and general questions.	Access to system or use of Microsoft Teams for virtual review.
CT Biopsy Mode	Enable the CT Technologist to understand Biopsy Mode set up and workflow.	Access to the system
CT Cardiac ECG Editor Review	Review the ECG Editor Tools and functionality.	TVA only access to scan data required
CT Cardiac Scanning Module	Explain patient prep, protocol set up and management, ECG editor tools, and networking.	Access to the system, or use of Microsoft Teams for virtual training
Desktop Functionality 1	Introduction to the console and the left desktop features on the system.	Access to the system, or use of Microsoft Teams for virtual training
Desktop Functionality 2	Introduction to the console and the right desktop features on the system.	Access to the system, or use of Microsoft Teams for virtual training

To schedule a course and for more information scan the QR Code to direct to our Virtual Course Registry or click [HERE](#).

[Click Here to Learn More About Virtual Instructor Led Training](#)



JB02206XU


Instructor Led 1 Hour Virtual Courses

CT Virtual Courses

 1 Hour



The following digital courses are available through the Virtual Machines or TiP Virtual Assist, these courses also complement the other courses shared above.

Course	Description	Pre-Requisites
CT Dose Optimization	Explanation on dose optimization tools and how to implement into the protocol workflow.	Access to the system, or use of Microsoft Teams for virtual training
CT Gemstone Spectral Imaging (GSI) Scanning *Revolution Ascend/HD/ Frontier/Apex CT Systems	Review of GSI scanning opportunities and workflow options. Includes, protocol data setup options, KeV and material density options and 2D reformat creation.	TVA
CT Perfusion Scanning and Networking	Explain the scanning process and networking options for imaging Perfusion.	Access to the system, or use of Microsoft Teams for virtual training
CT Protocol Review	Basic review on how to adjust their protocols parameters within a protocol.	TVA only access to Protocol Management is required
CT Protocol Building and Editing	Review with e Super User and/or Lead Technologist on how to build and edit protocols.	Scanner Accessibility & Lead CT Technologist or Protocol Manager that has authorization to access Protocol Management
CT Quality Assurance	Explanation or review of the QA process by scanning and analyzing the QA phantom and data.	CT phantom and access to the system
CT Quality Assurance Remote Training 	Explanation of QA process following a curriculum. QA phantom scanning and analyzing of the QA data.	CT phantom and access to the system
CT Reformat Review 1	Review the basic buttonology, reformat platform, and 2D reformat creation.	Access to the system, or use of Microsoft Teams for virtual training

To schedule a course and for more information scan the QR Code to direct to our Virtual Course Registry or click [HERE](#).

[Click Here to Learn More About Virtual Instructor Led Training](#)





JB02206XU

Instructor Led 1 Hour Virtual Courses

CT Virtual Courses



The following digital courses are available through Virtual Machines or TiP Virtual Assist, these courses also complement the other courses shared above.

Course	Description	Pre-Requisites
CT Reformat 2	Review how to create Mip, MinIP, AVG, and curved reformat imaging.	CT Reformat 1 and access to the system or use of Microsoft Teams for virtual training
CT Reformat 3	Review how to create Simple/Multiple Oblique and 3D reformat imaging.	CT Reformat 2 and access to the system or use of Microsoft Teams for virtual training
CT SmartMAR	Review the SmartMAR software and workflow.	Scanner Accessibility & SmartMAR software must be installed on the unit
CT SmartPrep Review	Review of SmartPrep parameters and workflow.	Access to the system, or use of Microsoft Teams for virtual training
CT SmartScore Protocol Set Up	Explanation of SmartScore Scan mode, patient prep, protocol parameters, and ECG set up.	SmartScore software and hardware must be installed on the unit.
CT SmartScore Scanning Remote Training 	Explanation of SmartScore Scan mode, patient prep, protocol parameters, and ECG set up, how to use RVQ measurement package.	SmartScore Scanner software and hardware must be installed on the unit.
CT SmartScore Post-Processing Remote Training 	Explanation of how-to post-process SmartScore exams using the SmartScore software.	Software loaded on the CT System or AW or AWS and SmartScore exams loaded onto the station is required for this session

To schedule a course and for more information scan the QR Code to direct to our Virtual Course Registry or click [HERE](#).

[Click Here to Learn More About Virtual Instructor Led Training](#)



JB02206XU

Instructor Led 2 Hour Virtual Courses

CT Virtual Courses



The following digital courses are available through the Virtual Machines or TiP Virtual Assist, these courses also complement the other courses shared above.

Course	Level	Description	Pre-Requisites
CT TAVR Scanning Module		Review patient prep, protocol set up and management, ECG editor tools and networking.	Scanner accessibility, Cardiac Hardware/Software, Cardiac images on the console
CT Volume Viewer Console Remote Training		Overview of 3D Rendering, protocols, VR and basic tools, and save options.	CTA images and access to the system
CT Bone VCAR		Review how to use the Bone VCAR software intended for the purpose of vertebrae detection and labeling. Spine exams loaded onto the AW pr AWS are required.	Software installed on the AWS, access and spine exams loaded on to the station is required for this session
CT Fast Stroke		Review how to use the image analysis software package intended for the purpose of displaying stroke work up images and the optimal workflow.	Software installed on the AWS, access and Perfusion exams loaded on to the station is required for this session
CT Intro to AW 1		Introduction to the AW console, capabilities, and functionality.	AW or AWS Access or use of Microsoft Teams for virtual training
CT Intro to AW 2		Review how to post-process CTA data and use the various tools from within the Volume Viewer application.	AW or AWS Access or use of Microsoft Teams for virtual training

To schedule a course and for more information scan the QR Code to direct to our Virtual Course Registry or click [HERE](#).

[Click Here to Learn More About Virtual Instructor Led Training](#)



JB02206XU

Instructor Led 1 Hour Virtual Courses

CT Virtual Courses

 1 Hour



The following digital courses are available through the Virtual Machines or TiP Virtual Assist, these courses also complement the other courses shared above.

Course	Level	Description	Pre-Requisites
CT Perfusion 4D		Review how to post-process Perfusion data using the various tools from within the Perfusion 4D application.	TVA with access to CT system or Microsoft Teams with virtual training

To schedule a course and for more information scan the QR Code to direct to our Virtual Course Registry or click [HERE](#).

[Click Here to Learn More About Virtual Instructor Led Training](#)



JB02206XU