

Imaging Protocol Manager for X-ray*

Simplify protocol management across your GE X-ray systems

[gehealthcare.com](https://www.gehealthcare.com)



Imaging providers face multiple challenges in managing X-ray protocols



Managing thousands of X-ray protocols across your fleet can be complex.



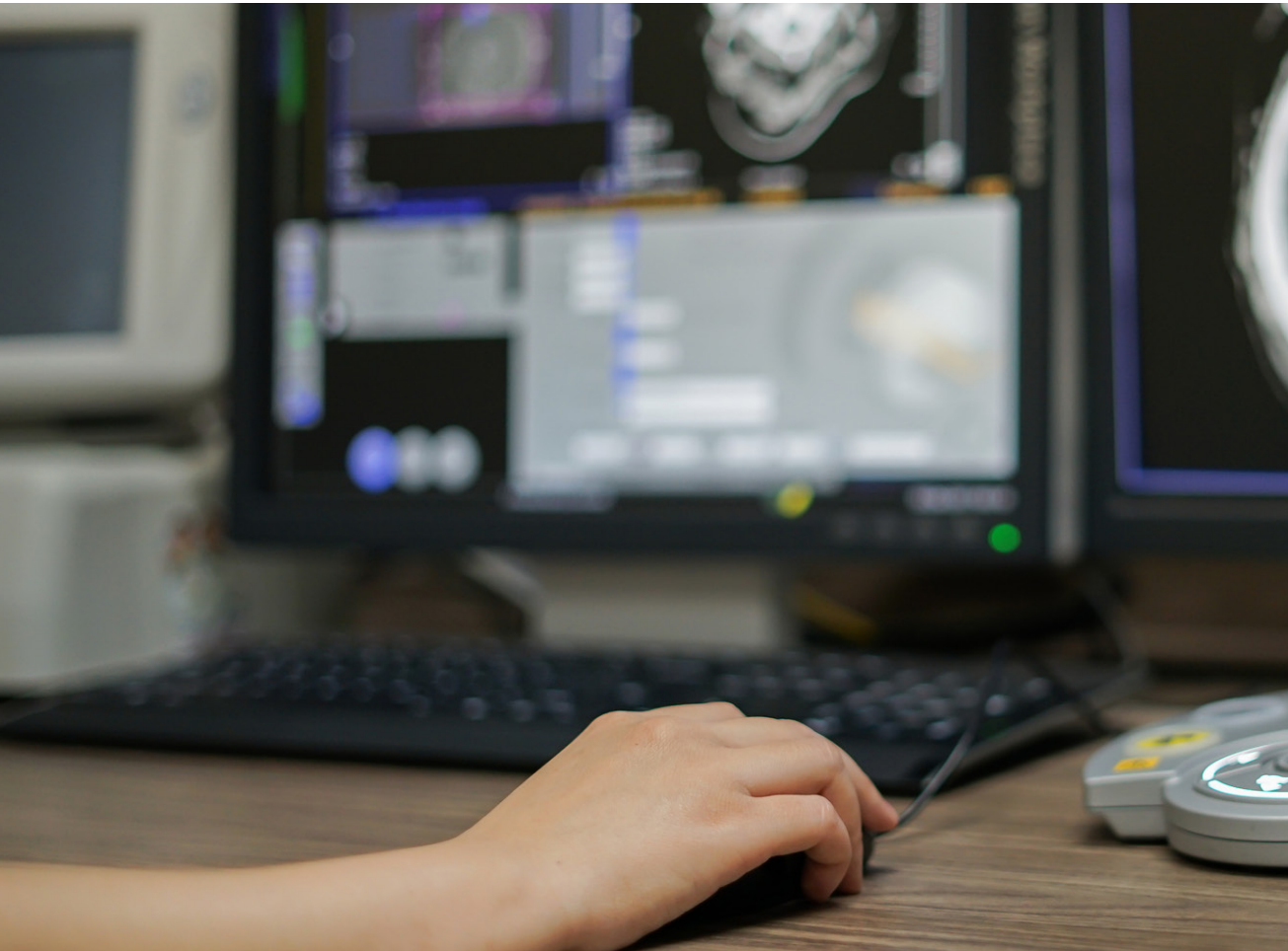
Protocol editing on multiple X-ray systems is time consuming and prone to error.



Variability in X-ray protocols could undermine diagnostic quality and lead to poor patient outcomes.

Simplify protocol management with Imaging Protocol Manager for X-ray

Imaging Protocol Manager for X-ray allows clinical teams to easily import, export, edit, monitor and distribute protocols across their GE X-ray devices.



Free up your X-ray system

- Edit protocols anywhere, anytime with an off-device Windows PC based app
- Import and export protocols via removable media
- Free-up X-ray systems to serve more patients

Save time with multi-edit

- Apply techniques by patient size, receptor size and AEC mode
- Apply multiple protocol edits in a single click

Centralize protocol editing

- Standardize protocols across your GE X-ray fleet
- Share protocols across different generations of systems
- Compatible with 13+ GE mobile and fixed X-ray devices

Time savings

Fixed X-ray systems:

58% 
FEWER CLICKS¹

31% 
LESS TIME SPENT^{1,3}

12 
DAYS SAVED²

Mobile X-ray systems:

61% 
FEWER CLICKS¹

65% 
LESS TIME SPENT^{1,3}

>2 
DAYS SAVED²

“This will be a huge help, it will be a life changer for us - with 40 fixed rooms in our fleet it’s a real pain for us to edit the protocols.”

— US Physicist

“I would love to see the entire protocol database for my fleet at one location. We don’t edit protocols very frequently but even for those infrequent changes we spend a lot of time on updating every system.”

— US Lead QA Technologist



A simple and efficient process

Installation:

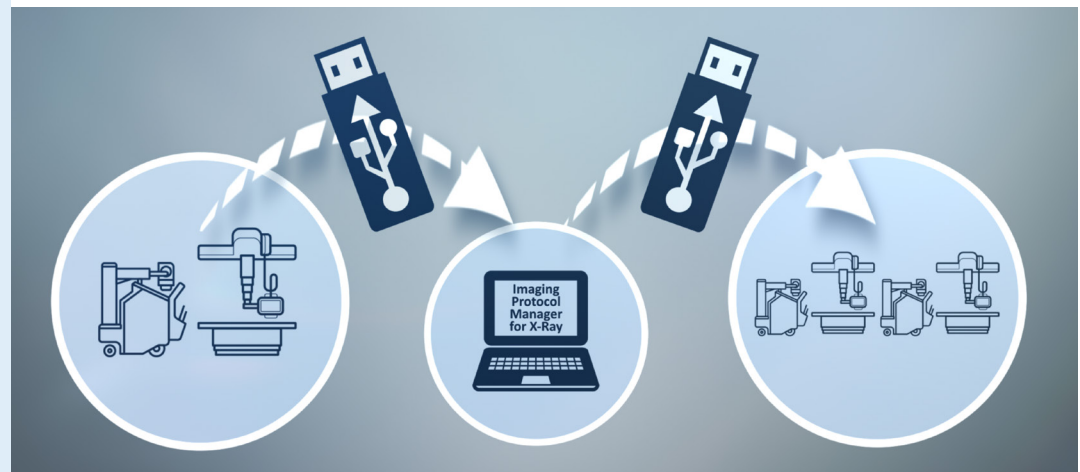
- **Install on your Windows-based PC:**

No new IT infrastructure needed

- **E-delivery:** First install and new versions delivered online

Protocol editing steps:

- 1 Import:** Import protocols via removable media (USB and DVD).
- 2 Multi-edit:** Apply batch updates for technique edits, eliminating clicks to apply by each patient size.
- 3 Export:** Distribute protocols to scanners throughout the hospital once edited
- 4 Verify:** Automatic smart validation occurs before the protocol databases are installed and overwritten.





About GE Healthcare:

GE Healthcare is the \$18 billion healthcare business of GE (NYSE: GE). As a leading global medical technology and digital solutions innovator, GE Healthcare enables clinicians to make faster, more informed decisions through intelligent devices, data analytics, applications and services, supported by its Edison intelligence platform. With over 100 years of healthcare industry experience and around 50,000 employees globally, the company operates at the center of an ecosystem working toward precision health, digitizing healthcare, helping drive productivity and improve outcomes for patients, providers, health systems and researchers around the world.

Follow us on Facebook, LinkedIn, Twitter, and Insights for the latest news, or visit our website www.gehealthcare.com for more information.

* Imaging Protocol Manager for X-ray is not yet CE marked. Not available for sale in all regions.

¹ Compares changing protocol techniques (specifically the grid and sid values) on the IPM for X-Ray application to a fixed-rad Discovery XR656 HD system

² Database used for calculation consist of a total 1293 exam categories and 6480 different views

³ The single view used to estimate the reduction is an AP_KNEES_BILAT view for a KNEE_BILAT_AP_LAT exam under the Lower Extremities anatomy category

⁴ Compares changing protocol techniques (specifically increasing the mAs up by one step and decreasing the kV values down by one step) on the IPM for X-Ray application for a mobile AMX Navigate system